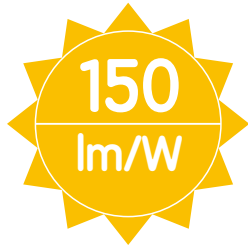


LED Batten Light with Sensor



Motion+daylight sensor
Detection area: 3-5 metres
Hold on time: 10s/1min/5min/30min
With remote control

Shenzhen ERS Technology

Factory Add: C209, Baohuasen International Center, Qianjin Second Road, Xixiang Town, Bao'an District, Shenzhen, China
Warehouse Add: 49 Metrolink Circuit, Campbellfield VIC 3061

Tel: +614 0182 6618 / +614 0182 6398

Email: info@erstech.com.au



IPART
Independent Pricing and Regulatory Tribunal
New South Wales



**Victorian
Energy
Upgrades**



**LM-80 TM 21 LM 79
ISTMT LCP**



APPLICATION

Indoor lighting, with IP42, it can be used at super market, family mart, corridor, parking lots, factory, warehouse, school, hospital, public building, metro station, train station, airport terminal and etc



SPECIFICATIONS

| | |
|--------------------|---|
| Item No. | ERS—AU14W120S |
| Power | 14W |
| Efficiency | 2100lm |
| Input Voltage | AC220–240V, 50Hz |
| Efficiency | 150lm/w |
| Sensor | Daylight & Microwave Motion Sensor, Sensing distance 3–5m |
| Dimmable | PWM |
| Driver Brand | ERS Element non-isolated driver 3 years warranty |
| LED Type | SMD 2835 |
| CCT | 2700–6500K |
| CRI | Ra > 80 |
| Power Factor | > 0.9 |
| Beam Angle | 120° |
| IP Rating | IP 42 |
| Warranty | 3 years |
| Working Temp | –20~50°C |
| Lamp Body Material | PC+SPCC |
| Product Size (mm) | 1170X83X72 |

Shenzhen ERS Technology

Factory Add: C209, Baohuasen International Center, Qianjin Second Road, Xixiang Town, Bao'an District, Shenzhen, China
Warehouse Add: 49 Metrolink Circuit, Campbellfield VIC 3061

Tel: +614 0182 6618 / +614 0182 6398

Email: info@erstech.com.au



IPART
Independent Pricing and Regulatory Tribunal
New South Wales



**Victorian
Energy
Upgrades**



**LM-80 TM 21 LM 79
ISTMT LCP**



LED MANUAL INSTRUCTION



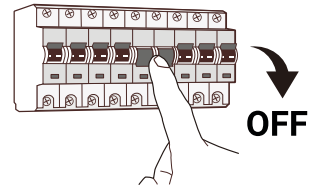
Safety Notice:

- ❶ Installation should be done by registered electricians.
- ❷ Before replacing the driver, please switch off the power supply and wait until it cools down completely.
- ❸ Never touch the working luminaire
- ❹ In any case of malfunction, switch off the power supply immediately, and do not try to repair it yourself.
- ❺ Repairment should only be done by registered electricians or official service agent.

Include

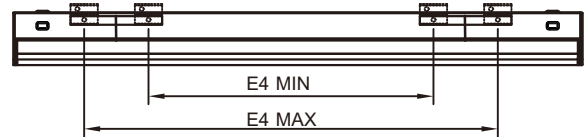
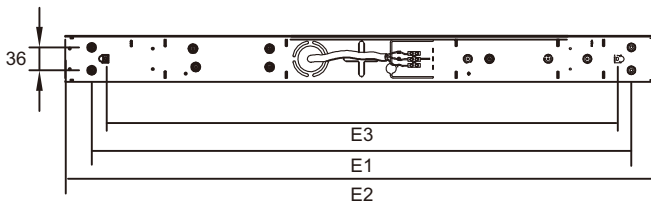


Not Include



WARNING

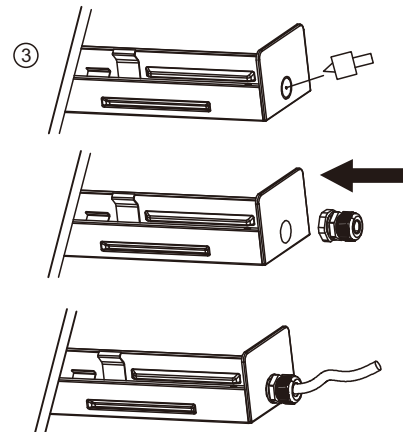
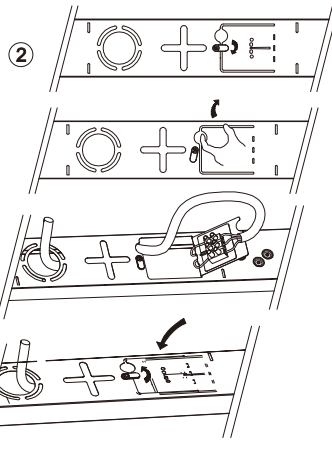
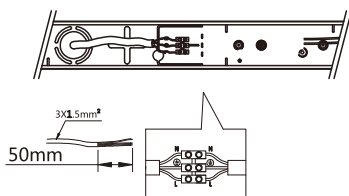
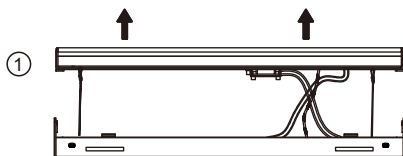
- A** Switch off the power supply before installation



| Product Size | E1(mm) | E2(mm) | E3(mm) | E4(mm)Min | E4(mm)Max |
|--------------|--------|--------|--------|-----------|-----------|
| 700x83x72mm | 493 | 700 | 638 | 270 | 400 |
| 1170x83x72mm | 693 | 1170 | 1107 | 680 | 870 |
| 1470x83x72mm | 1263 | 1470 | 1407 | 980 | 1180 |

B

C



Shenzhen ERS Technology

Factory Add: C209, Baohuasen International Center, Qianjin Second Road, Xixiang Town, Bao'an District, Shenzhen, China
Warehouse Add: 49 Metrolink Circuit, Campbellfield VIC 3061

Tel: +614 0182 6618 / +614 0182 6398

Email: info@erstech.com.au



IPART
Independent Pricing and Regulatory Tribunal
New South Wales



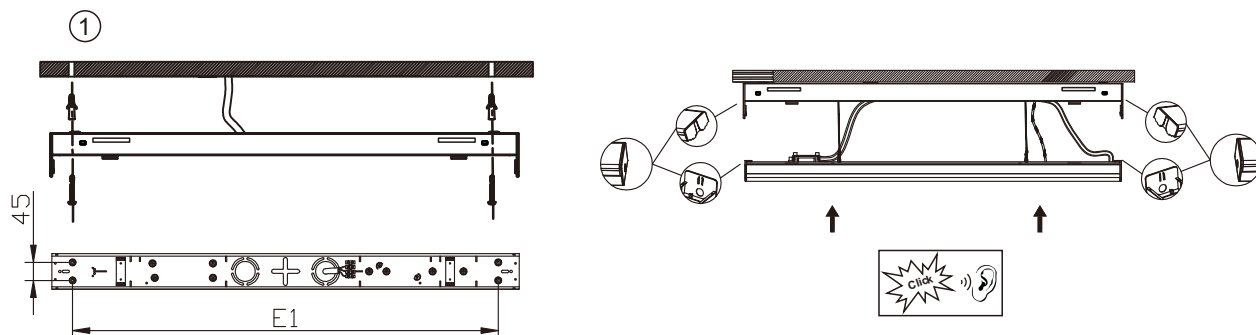
Victorian Energy Upgrades



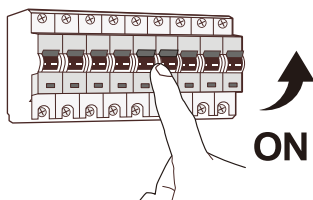
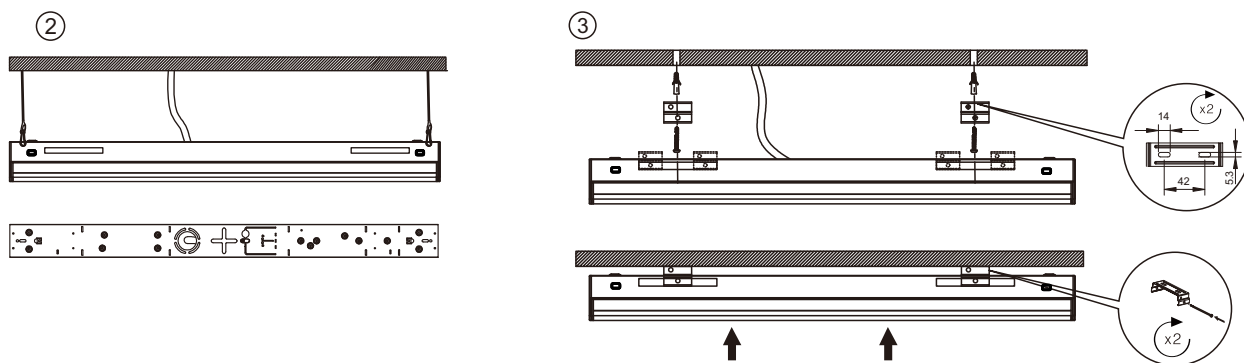
**LM-80 TM21 LM79
ISTMT LCP**



D

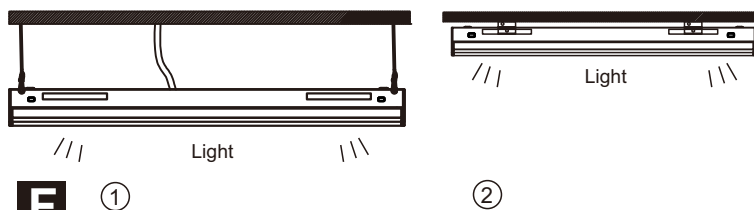


E



! WARNING

Switch on the power supply
before installation



F ①

②

Shenzhen ERS Technology

Factory Add: C209, Baohuasen International Center, Qianjin Second
Road, Xixiang Town, Bao'an District, Shenzhen, China
Warehouse Add: 49 Metrolink Circuit, Campbellfield VIC 3061

Tel: +614 0182 6618 / +614 0182 6398

Email: info@erstech.com.au



IPART
Independent Pricing and Regulatory Tribunal
New South Wales



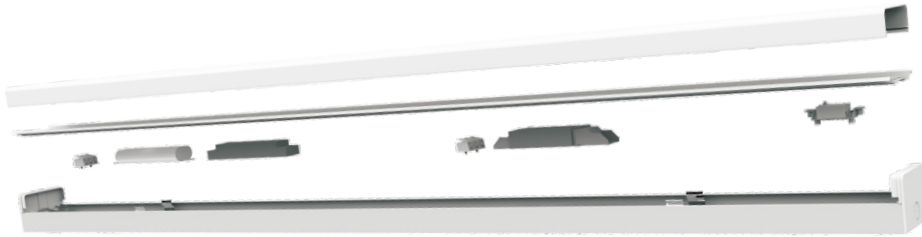
**Victorian
Energy
Upgrades**

3 year
warranty

**LM-80 TM21 LM79
ISTMT LCP**

ESSENTIAL SERVICES COMMISSION

DETAILS



Light: ON/OFF function of the lamp

Sensor: ON/OFF function of the Sensor

Hold time of current brightness

Daylight threshold

Brightness

Stand-by dimming level

Detection Range

Reset

Test

Light

Sensor

ON

OFF

ON

OFF

Power

100%

80%

50%

30%

Hold time

10s

1min

5min

30min

Stand-by dimming level

80%

50%

30%

0%

Daylight threshold

Disable

50Lux

100%

75%

Range

ERS tech

Shenzhen ERS Technology

Factory Add: C209, Baohuasen International Center, Qianjin Second Road, Xixiang Town, Bao'an District, Shenzhen, China
Warehouse Add: 49 Metrolink Circuit, Campbellfield VIC 3061

Tel: +614 0182 6618 / +614 0182 6398

Email: info@erstech.com.au



IPART
Independent Pricing and Regulatory Tribunal
New South Wales



Victorian Energy Upgrades



LM-80 TM 21 LM 79
ISTMT LCP



PACKING

| N.W.(KG) | G.W.(KG) | CARTON SIZE(mm) | QTN/CTN |
|----------|----------|-----------------|---------|
| 17 | 18.5 | 1210X235X280 | 9 |

Shenzhen ERS Technology

Factory Add: C209, Baohuasen International Center, Qianjin Second
Road, Xixiang Town, Bao'an District, Shenzhen, China
Warehouse Add: 49 Metrolink Circuit, Campbellfield VIC 3061

Tel: +614 0182 6618 / +614 0182 6398

Email: info@erstech.com.au



IPART
Independent Pricing and Regulatory Tribunal
New South Wales



**Victorian
Energy
Upgrades**



**LM-80 TM21 LM79
ISTMT LCP**

